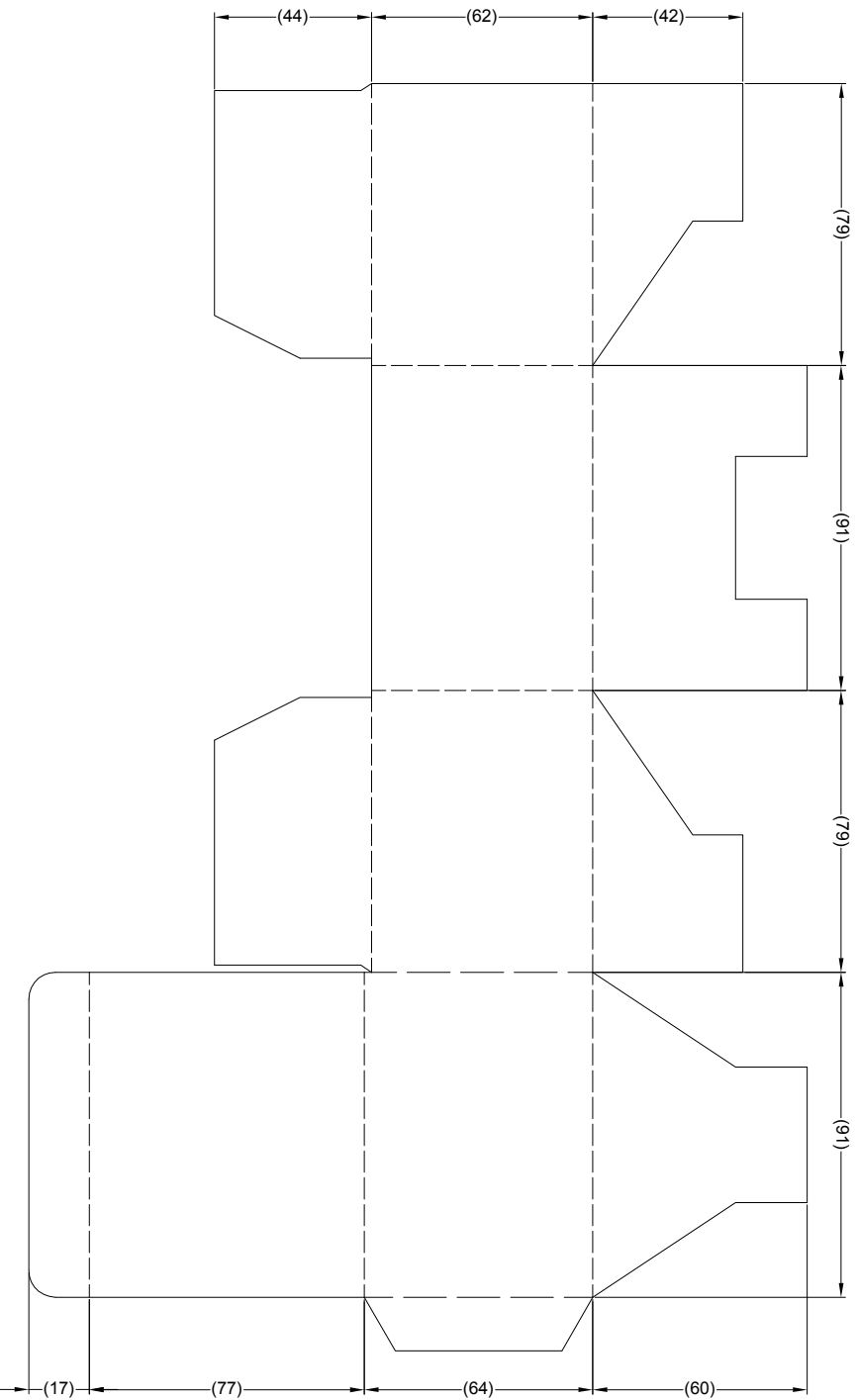


Revision Notes			
R1 -			
APPA -	Drawn -	Checked -	Approved -
			Date -



- NOTES:
1. FOR LOCATION OF GIFTBOX AND SERIAL NUMBER LABELS REFER TO DOCUMENT: QCP-000002-XX10.
 2. REFER TO ASSEMBLY PLANT DRAWING SV00347 REV.00 FOR DETAILED BOX DIMENSIONS.
 3. ASSEMBLED BOX DIMENSIONS ARE: (L) 91MM X (W) 79MM X (H) 64MM.
 4. BOX MATERIAL IS 350g WHITE GLOSS CARD.

PROPRIETARY NOTICE
 THIS DESIGN AND TECHNICAL INFORMATION APPEARING ON THIS DRAWING IS THE PROPERTY OF BRIGADE ELECTRONICS, AND IS DISCLOSED IN CONFIDENCE. IT IS NOT TO BE COPIED, REPRODUCED, REVEALED TO OR EXPLOITED BY OTHERS, EITHER IN WHOLE OR IN PART WITHOUT THE EXPRESS WRITTEN CONSENT OF BRIGADE ELECTRONICS.



Assembly PI Approval XHUANG 11/03/13		Approved by SMATTHEWS		Checked by BCHILD		Drawn by RBATES	
Angle of Projection 		Units mm	Scale N/A	Released 11/03/13	Assembly Ref -		
Status RELEASED		Part No 4362		SV 91x79x64 WGB		BE-002296-00-13	